

The Wishbone



Regular & ADA Sizes



Deschutes State Park, OR

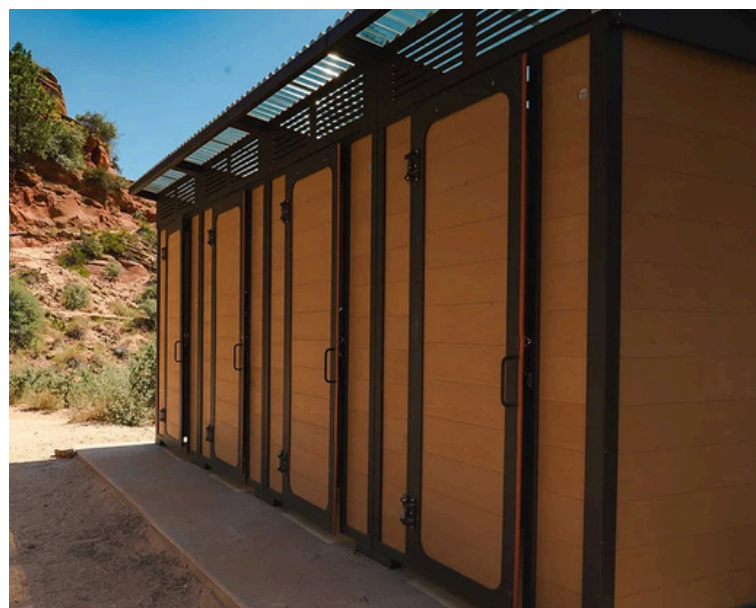
The Wishbone is one of the most versatile toilet structures designed for backcountry and frontcountry sites. The structures are prefabricated, flat pallet packed, quick and easy to assemble, and require zero annual maintenance. Use this building to replace your pit toilets, portable toilets, smelly vault toilets, or WAG bags program.



Bagby Hot Springs, Mt. Hood National Forest, OR

Highlights

- Fully prefabricated in sections
- All pieces can be lifted by 1 or 2 people
- Assembles in under one day (with 2 people)
- Aluminum powder coated frame with stainless hardware
- 100 lb psf snow load and 100 mph wind load strength
- Naturally lit through clear roofing with ample ventilation
- Available in shed and gable roof styles
- Many frame and lumber color options to choose from
- 4-month average lead time



Angels Landing, UT

Features

The Wishbone is the most widely used building system in the Toilet Tech lineup. It integrates seamlessly with the prefabricated Decompose Vault (DCV) and Urine-Diverting Conveyor (BTW). Fully detailed installation plans and a complete set of hardware are provided, or we can install the unit in the location of your choice.

There are two sections to the Wishbone. The toilet stall houses the BTW toilet seat while the building's rear extension encloses the solid waste DCV. A piston-assisted hatch on the back side of the toilet structure provides maintenance access to the BTW conveyor and DCV while maintaining sufficient separation from the toilet stall.

Site / Geography / Warranty

The Wishbone withstands snow load but, due to the cost-saving minimalist design and outswing door, it can be difficult to access in the winter in high snow load regions. A five-year warranty is provided but does not cover vandalism.

Options

- Standard (Regular) or ADA-sized stalls
- Two roof options: Gable (John) or Shed (Forest)
- Three wall lumber options: recycled plastic T&G, cedar T&G, or DIY (stained plywood looks great)
- Single, Double, or Quad configurations
- More than 100 frame and lumber color combinations



Mueller State Park, CO



Camp Tamarack, OR
Example of DIY Stained Siding



Mt. Lowe Trail Camp, CA

"The Toilet Tech facility at Mt. Lowe Trail Camp has been working very well. It is a popular trail camp site year round.

This facility has been operational since 2020 and there have been no mechanical issues or complaints from the public. It looks great in the campground, too.

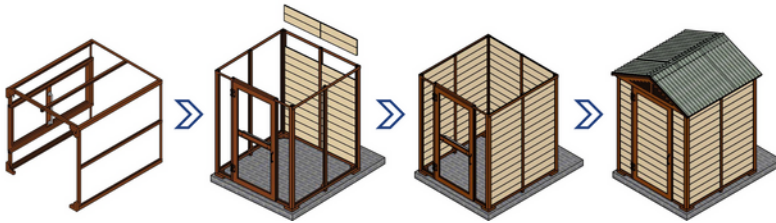
We have not had to pump it since installation, and it has good ventilation. I would recommend this toilet to other agencies who service the public."

*Michael Paniagua, Asst Recreation Manager
Angeles National Forest, CA*



A peek inside the Mt. Lowe ADA building

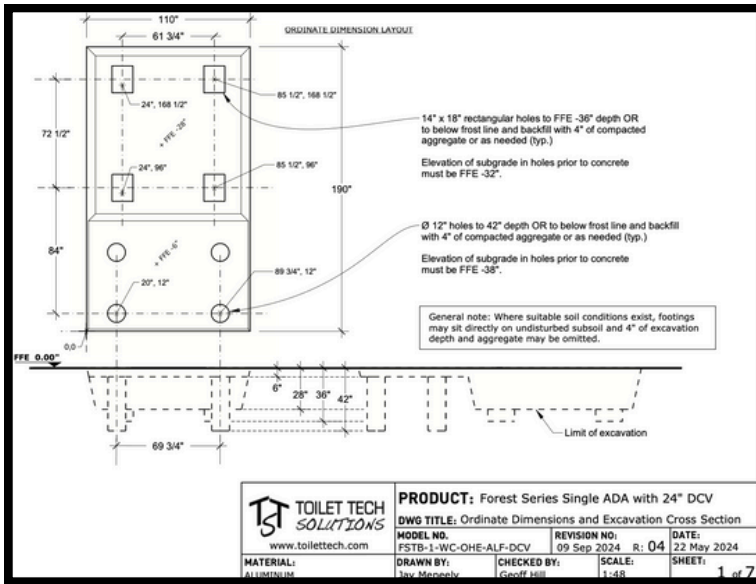
Step-by-Step Instructions for Full System Build



Building frame color options



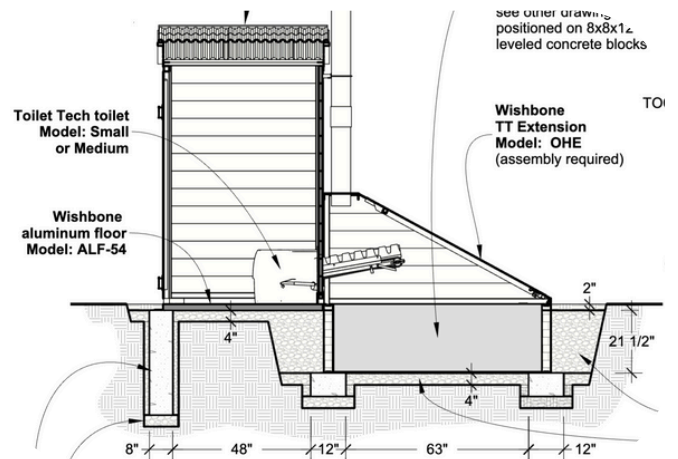
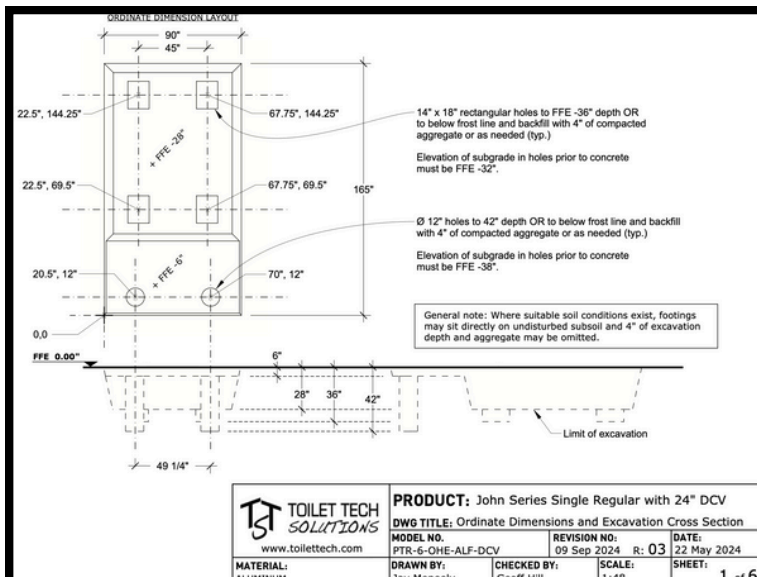
ADA Site Plan Preparation Documentation



Recycled T&G Plastic Wood Colors



Standard Size Site Plan Preparation Documentation



Detailed Site Prep & Installation Plans for Each Model

Building Spec Chart	Single Standard	Single ADA
# of Pallets	2	2
Full Weight * (lb)	1800	2500
Snow Load (lb/sqft)	100	100

* includes weight of DCV & BTW