

The Alaska & Teton



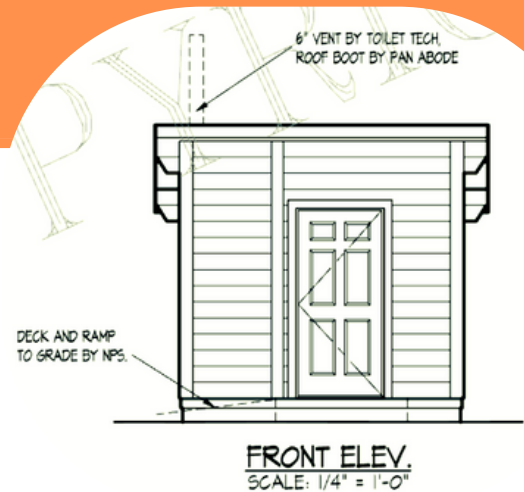
“Our monitoring has shown that this system is reliable and requires only minimal maintenance. The park is currently purchasing more of these units to replace the old pit systems within our backcountry.”

Mark Ortega, Facilities
Glacier Bay National Park, Alaska

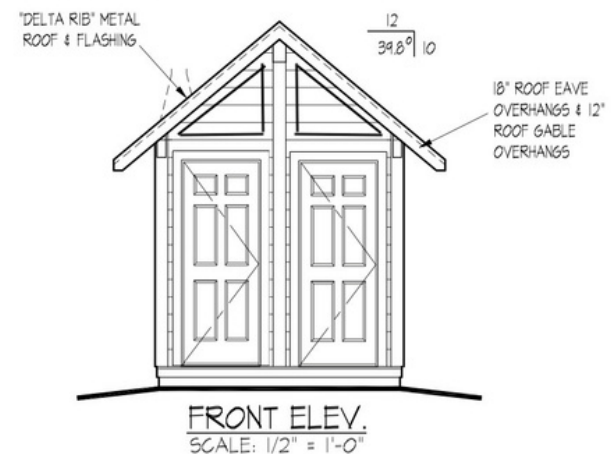
The Alaska is a strong, beautiful, full 4-season toilet building, making it a great choice for backcountry and frontcountry sites with winter use or high snow load. The structure is made from laminated cedar timbers, is fully prefabricated, and container/flat packed. This makes assembly possible either by local contractors or skilled employees. Use this building to replace your pit toilets, portable toilets, smelly vault toilets, or WAG bags program.

Highlights

- Constructed with the Phoenix Timber Building System, a >100-year-old remote site building system
- Fully prefabricated with few onsite finishing cuts needed
- All pieces can be lifted by 1 or 2 people
- Assembly with 2-3 person crew in 3-5 days
- Single and double stall floor plans available
- Regular size and ADA size stall options
- Footprints include: 4'x10', 8'x10', and 12'x10' sizes
- Available in shed and gable roof styles
- Withstands snow loading up to 300 lb psf
- 4-month average lead time



Alaska Model - Flat Shed Roof Design
(single ADA stall floor plan shown)



Teton Model - Gable Roof
(double regular floor plan shown)