

# URINE DRAINFIELDS

Toilet Tech Solutions urine-diverting conveyor toilets are the next generation of human waste management for remote sites. They separate >99% of urine at the source, diverting 75-80% of total waste mass into the soil. TTS offers three approved urine drainfield packages, ranked by environmental impact.

- Environmentally compliant
- Not a pit toilet
- Very low maintenance
- Eliminates odors and operational challenges
- All three drainfield packages approved by county/state agencies
- EPA approved installation (Bronze) at Two Sentinels Girl Scouts Camp

Each drainfield package is designed with a 10' distribution area which can accommodate more than 5 gallons of urine daily (approximately 100 users). Larger drainfields can accommodate additional users.



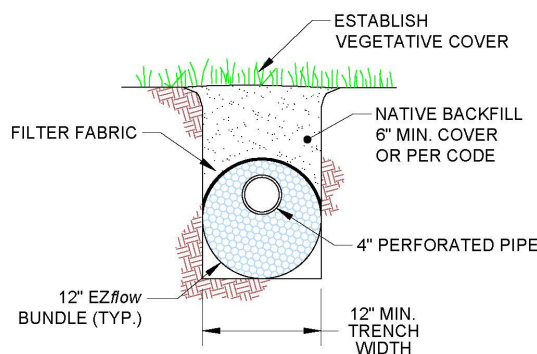
Silver Drainfield - Rocky Flats Campground, WA

## Silver Drainfield

The Silver drainfield is the most popular package offered by TTS. This system features a 20L stainless steel settling tank that contains the urine for 1-2 days depending on toilet usage. Urine will then seep into the EZflow for even distribution - a styrofoam chip layer wrapped around a perforated corrugated pipe. Gravel is not required and native backfill can be used instead of imported or site-cleaned fill, making installation easier and quicker. This drainfield delivers the best value for most customers. All parts are supplied by TTS.

### Example sites:

- Rocky Flats Campground, WA
- Antelope Island State Park, UT
- Deschutes State Park, OR



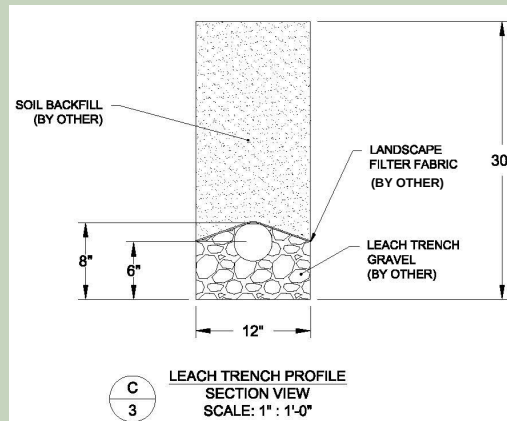
Silver Drainfield -  
Rocky Flats Campground, WA

## Bronze Drainfield

The Bronze drainfield package is the most simple workhorse of drainfields. This system replaces the EZflow of the Silver drainfield with a 4" perforated corrugated pipe on top of a layer of gravel to ensure distribution. The pipe and gravel downstream of the settling tank are not provided by TTS.

### Example Sites:

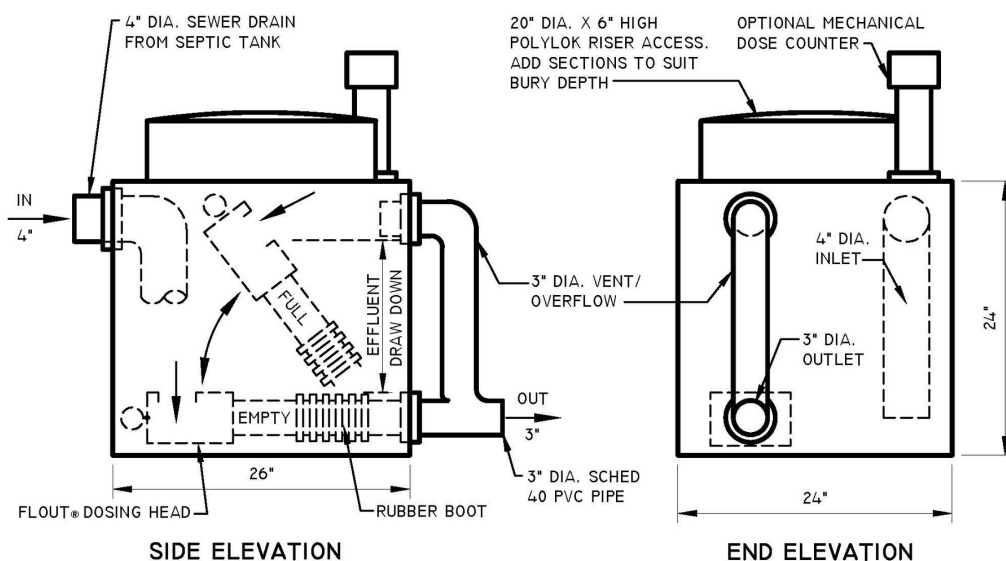
- Zion National Park, UT
- Angeles National Forest, CA
- Mueller State Park, CO
- Two Sentinels Girls Scouts Camp, CA



Bronze Drainfield - Zion National Park, UT

## Gold Drainfield

The Gold drainfield is the most environmentally responsible drainfield package. This system replaces the urine settling tank of the Silver drainfield with a dosing tank. The dosing tank accumulates urine until it is full, providing ample opportunity for ammonia and pH to kill pathogens. The urine is released into the EZflow all at once, ensuring the entire length of the drainfield is saturated. The soil is then allowed to rest for weeks before the next dose, giving soil microorganisms time to absorb and transfer nutrients to nearby plants. All parts are supplied by TTS.



Gold Drainfield - Kids Camp, WA

### Example Sites:

- Bryce Canyon National Park, UT
- Liberty Lakes Regional Park, Spokane County, WA